
www.wabash.edu/lafollette

What Does Economics Have to Say About Culture?
Joyce Burnette

What Does Economics Have to Say About Culture?

1. Subject

a

seem

Time Without Work
Hard Heads, Soft Hearts

1. Subject

Review of Economics and Statistics
of Economic Behavior and Organization

Journal of Economic Literature
Journal

TABLE V
INDIVIDUAL-LEVEL OLS ESTIMATES USING WVS DATA

	(1)	(2)	(3)	(4)	(5)	(6)	
	Dependent variable:						
	Female labor force participation, 1995–2007		When jobs are scarce, 1995–2007		Men better political leaders, 1995–2007		
Mean of dep. var.	0.55	0.55	0.46	0.47	2.62	2.64	
Traditional plough use	−0.177*** (0.035)	−0.002 (0.031)	0.193*** (0.033)	0.100* (0.059)	0.224*** (0.069)	0.304*** (0.117)	
Individual & district controls	yes	yes	yes	yes	yes	yes	
Contemporary country controls	yes	n/a	yes	n/a	yes	n/a	
Fixed effects	continent	country	continent	country	continent	country	
Number of countries	73	78	74	79	50	55	
Number of districts	672	698	674	700	453	479	
Observations	43,801	47,587	80,303	87,528	64,215	72,152	
Adjusted R-squared	0.17	0.27	0.21	0.28	0.19	0.26	
	0.21	0.25	0.19	0.26	R-squared	0.17	0.27

2. Method

Q

and

1. *Does culture affect what we do?*

TABLE 2—CULTURE, WORK, AND FERTILITY

	Dependent variable is hours worked					Dependent variable is children			
	(1)	(2)	(3)	(4)	(5)	(6)	(7)	(8)	(9)
Female	0.047***	0.041**	0.072***	0.045***	0.053***				-0.010
LFP 1950	(0.012)	(0.016)	(0.015)	(0.014)	(0.016)				(0.008)
TFR 1950					-0.225**	0.250***	0.219***	0.219***	0.194***
					(0.103)	(0.056)	(0.041)	(0.041)	(0.051)
High school		0.490	2.136***	2.114***	2.059***	-0.415**	-0.393***	-0.378**	
		(0.520)	(0.575)	(0.511)	(0.572)	(0.181)	(0.151)	(0.147)	
Some college		-0.147	3.205***	3.336***	3.160***	-0.503**	-0.485***	-0.457**	
		(1.078)	(1.034)	(0.963)	(1.024)	(0.213)	(0.185)	(0.179)	
College +		0.815*	6.032***	6.744***	5.968***	-0.869***	-0.865***	-0.838***	
		(0.492)	(0.494)	(0.448)	(0.480)	(0.214)	(0.204)	(0.195)	
Husband high school			-1.737**	-1.826***	-1.789**			-0.218*	-0.210*
			(0.730)	(0.694)	(0.716)			(0.116)	(0.113)
Husband some college			-1.329	-1.312*	-1.370*			-0.184*	-0.177*
			(0.829)	(0.786)	(0.822)			(0.103)	(0.103)
Husband college +			-5.003***	-4.467***	-5.054***			-0.194***	-0.185***
			(0.452)	(0.493)	(0.459)			(0.050)	(0.049)
Husband total income			-2.844***	-2.806***	-2.862***			0.116**	0.118**
			(0.308)	(0.258)	(0.303)			(0.049)	(0.049)
Child < 5				-7.536***					
				(0.554)					
Observations	6,774	6,774	6,774	6,774	6,774	6,774	6,774	6,774	6,774
Adjusted R ²	0.018	0.024	0.053	0.053	0.098	0.059	0.098	0.105	0.106

Notes: SMSA fixed effects in all specifications. Age and age squared for wife and age range dummies for husband in all specifications with demographics. Robust standard errors in parentheses account for clustering at country level. Income is measured in units of \$10,000. All specifications include a constant.

- *** Significant at the 1 percent level.
- ** Significant at the 5 percent level.
- * Significant at the 10 percent level.

2. *Where do cultural gender norms come from?*

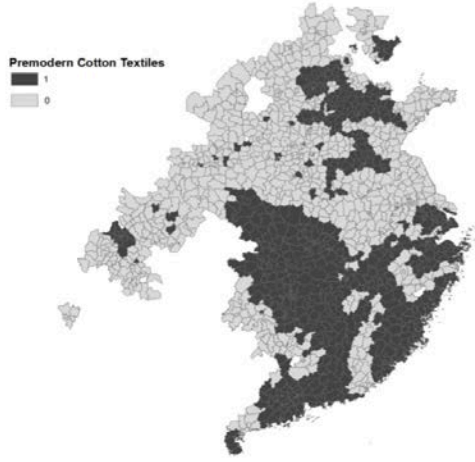
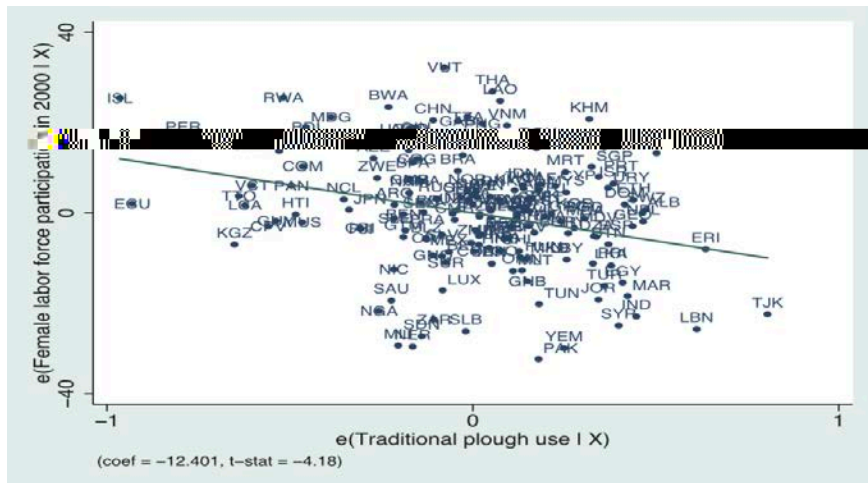
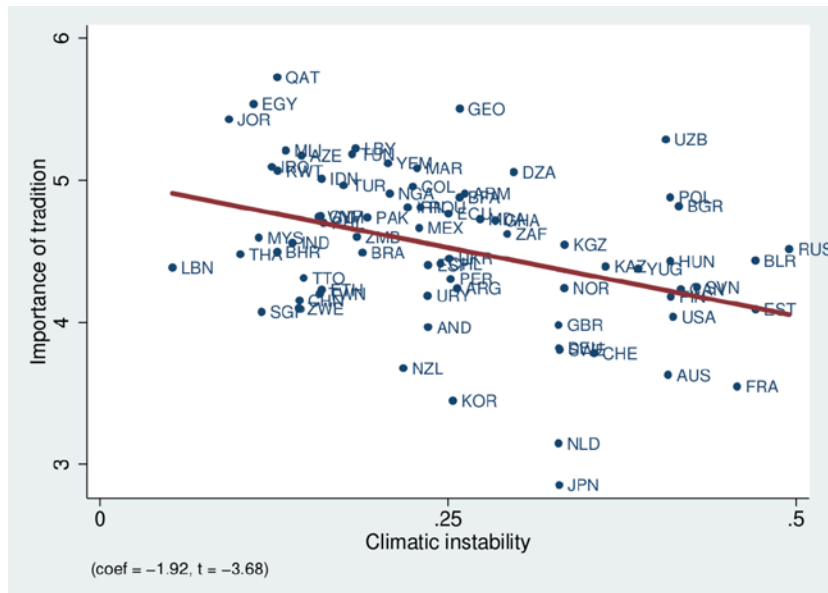
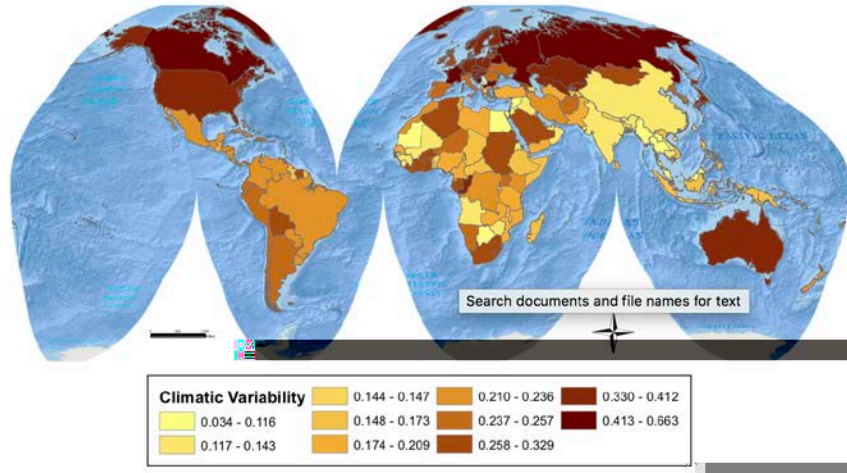


Figure I: Premodern Cotton Textile Production (1368-1840)





European Society

Making a Living, Making a Difference: Gender and Work in Early Modern

Quarterly Journal of Economics

in

Women and the Workplace: The Implications of Occupational

Segregation

Quarterly

Limited Livelihoods: Gender and Class in Nineteenth-Century England

New York Review of Books

Organizational

Behavior and Human Decision Processes

American Economic

Review

Journal of Economic History,

+LVWRULFDO -RXUQDO

Quarterly Journal of Economics,

8QGHUJUDISLWUINHOH\

\$EVWUDFW